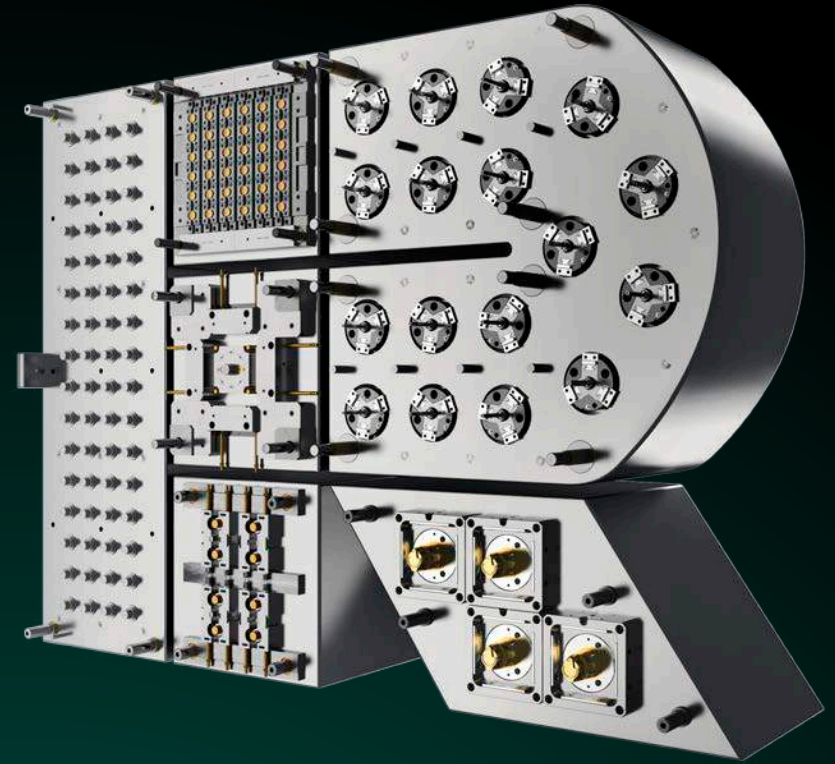


HIGH PERFORMANCE INJECTION MOULDS

for more output in a shorter time



PERFORMANCE IN PRODUCTS AND SERVICES

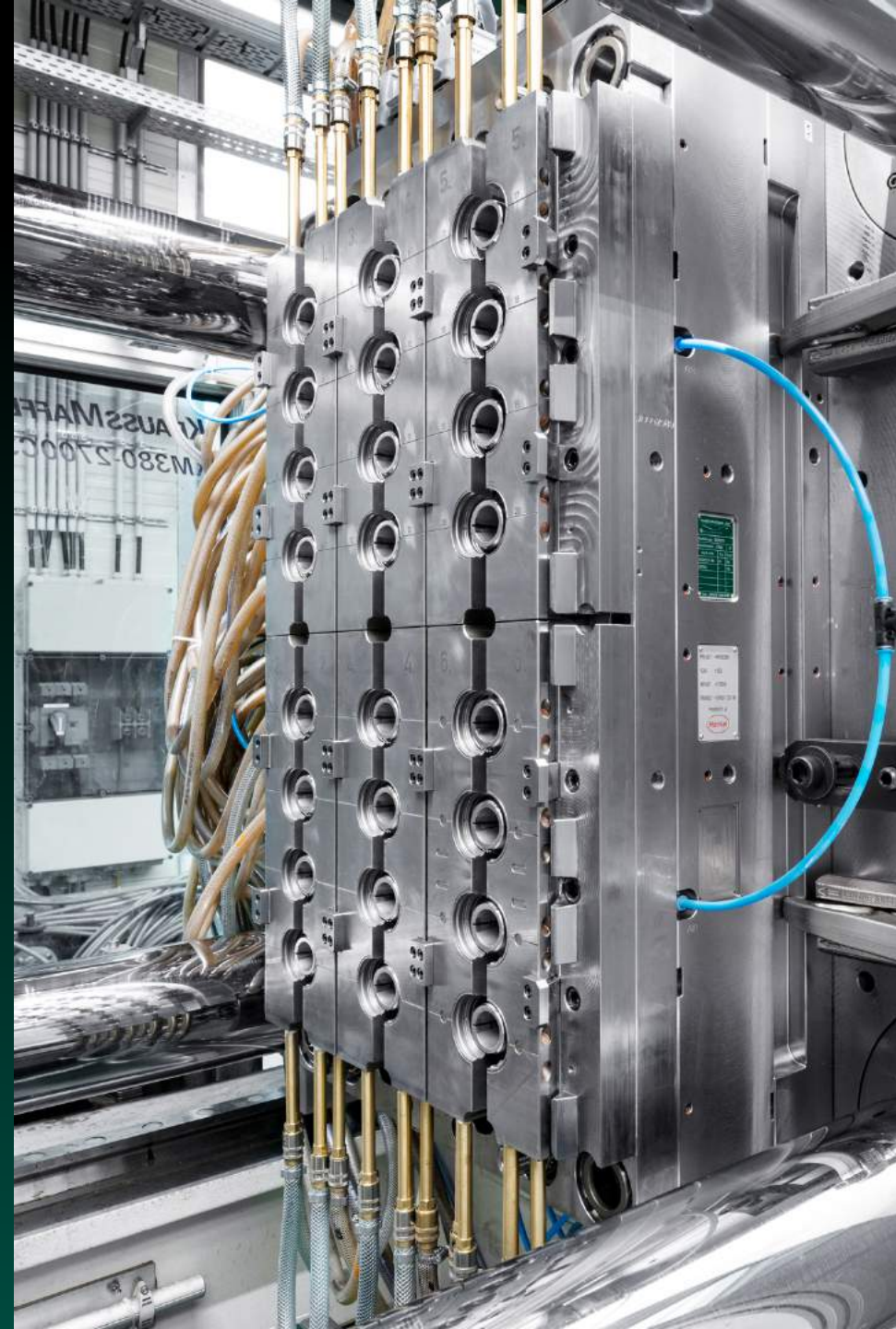
By Erwes Reifenberg

- 01 PRODUCTS
- 02 SERVICES
- 03 BENEFITS
- 04 CUSTOMERS
- 05 COMPANY

01 PRODUCTS

Get a first impression of our industry solutions,
listed here by way of example only.

Packaging
General & Technical
Medical



PACKAGING



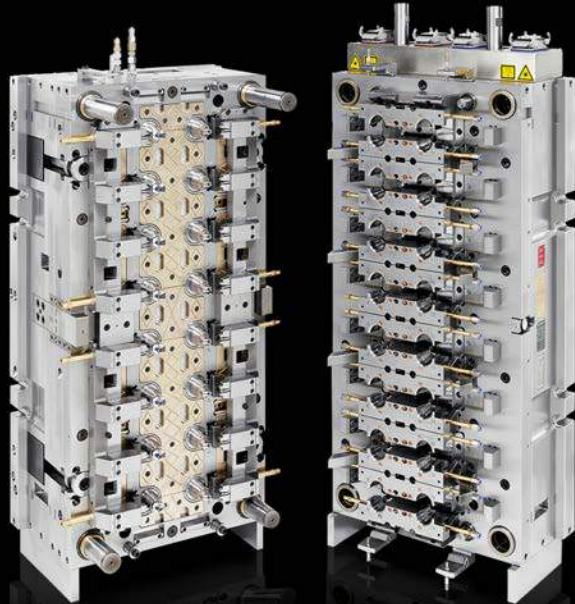
PROJECT HANK

- clean and quick article-covering via air cylinders
- ensuring trouble-free and long-term mould operation
- efficient and easy: Dismantling a cavity on your production machine
- ideal tool handling and implementation in your machine park ensured by efficient mould design

PROJECT HANK



- clean and quick article-covering via air cylinders
- ensuring trouble-free and long-term mould operation
- efficient and easy: Dismantling a cavity on your production machine
- ideal tool handling and implementation in your machine park ensured by efficient mould design



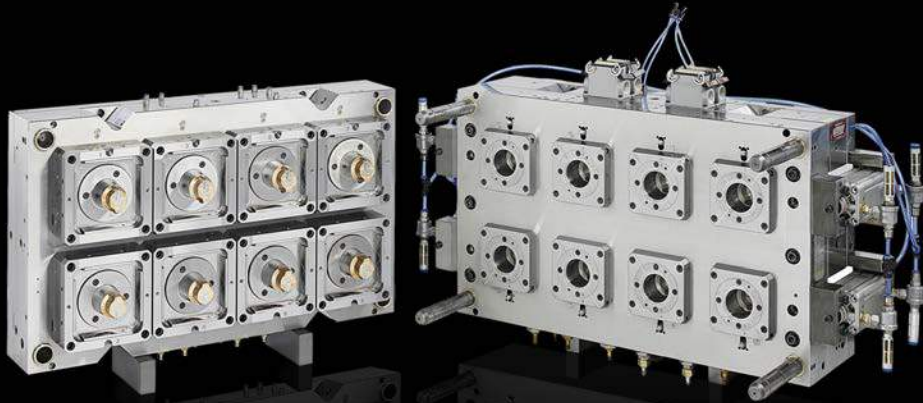
PROJECT RUNWAY

- excellent optics: separations on the article from the end customers and product consumers are not visible
- ideal mould processes and minimal maintenance through optimal coordination of the moving mould contour parts
- easy dismantling and assembly of individual parts are saving time and costs within your production (ER-quick maintenance principle)

PROJECT RUNWAY



- excellent optics: separations on the article from the end customers and product consumers are not visible
- ideal mould processes and minimal maintenance through optimal coordination of the moving mould contour parts
- easy dismantling and assembly of individual parts are saving time and costs within your production (ER-quick maintenance principle)



PROJECT CREAM CAN

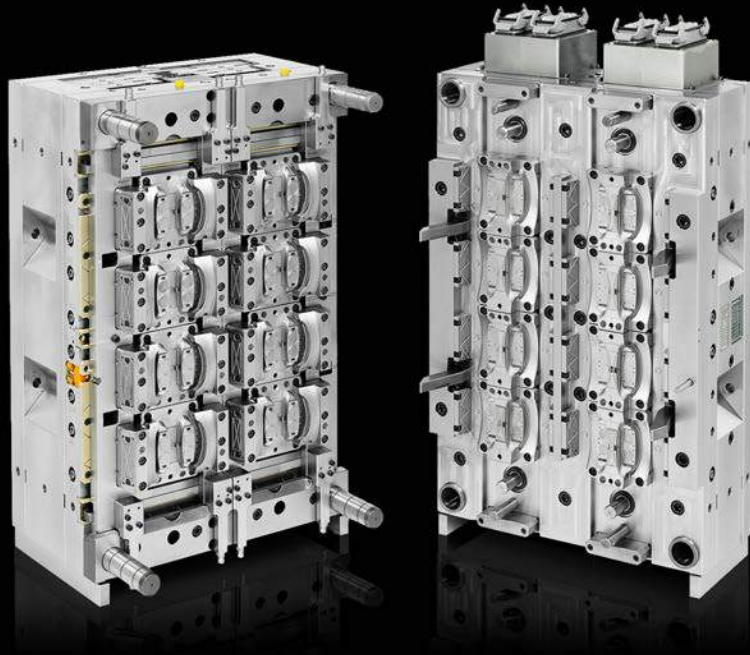
- highest production flexibility through modular structure of the cavity
- our high-speed mould ensures an extremely short cycle and cost-effective production
- article structure has a constant thin wall thickness
- precisely defined material pairings guarantee a very long mould life

PROJECT CREAM CAN



- highest production flexibility through modular structure of the cavity
- our high-speed mould ensures an extremely short cycle and cost-effective production
- article structure has a constant thin wall thickness
- precisely defined material pairings guarantee a very long mould life

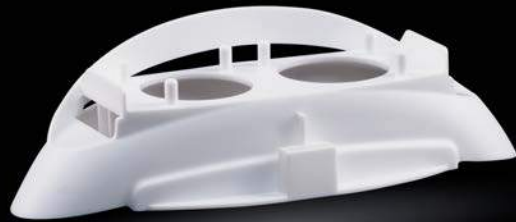
TECHNICAL & GENERAL



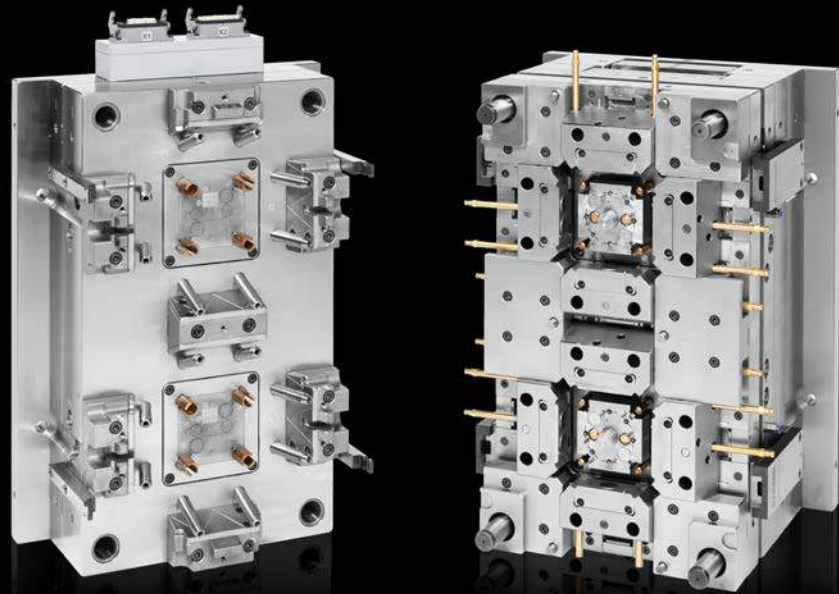
PROJECT DUO ACTIVE

- compact tool design ensures optimal tool handling and efficient use in your machine park
- shortest cycle times through cooling within the slider and slide attachments

PROJECT DUO ACTIVE



- compact tool design ensures optimal tool handling and efficient use in your machine park
- shortest cycle times through cooling within the slider and slide attachments



PROJECT FLUSH BOX

- part of a series that comprises 19 Moulds
- reduced cycle times (up to 50 %) through previous analyses and special use of alloys
- ideal tool handling and implementation in your machine park ensured by efficient mould design
- 0 % wall collapse through the special use of copper materials

PROJECT FLUSH BOX



- part of a series that comprises 19 Moulds
- reduced cycle times (up to 50 %) through previous analyses and special use of alloys
- ideal tool handling and implementation in your machine park ensured by efficient mould design
- 0 % wall collapse through the special use of copper materials

PROJECT BODY Q



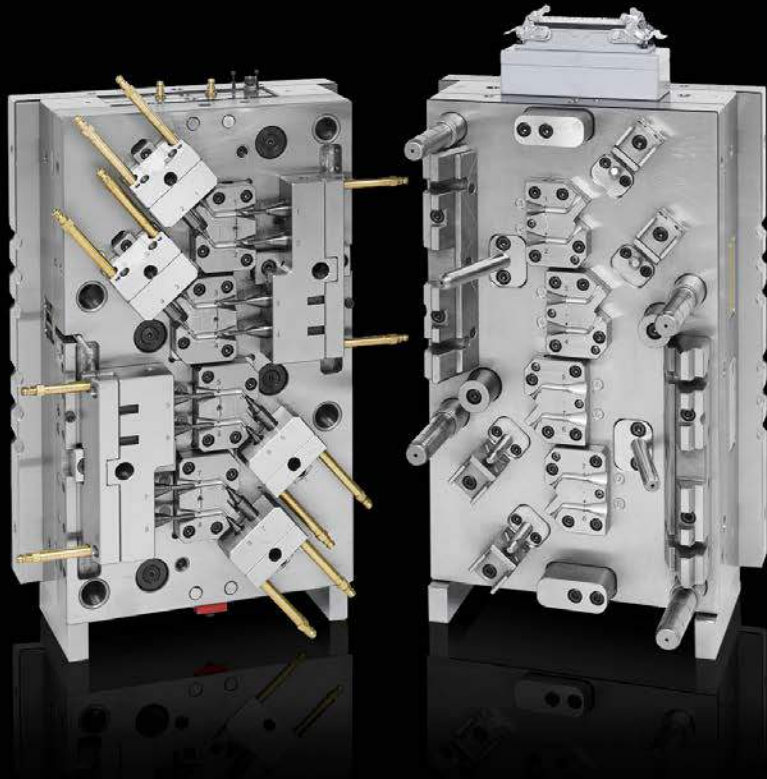
- increases the (dimensional) accuracy of the article
- high customer satisfaction due to excellent long-term results
- guaranteed production reliability and dimensional accuracy
- robust tool construction ensures stable and smooth motion sequences
- optimal mould operation through exact guidance and control of the slide units

PROJECT BODY Q



- increases the (dimensional) accuracy of the article
- high customer satisfaction due to excellent long-term results
- guaranteed production reliability and dimensional accuracy
- robust tool construction ensures stable and smooth motion sequences
- optimal mould operation through exact guidance and control of the slide units

MEDICAL



PROJECT COMPULE

- remarkable cycle reduction through specially made cooling within the sliders
- dismantling of the components on our customer's production machine possible
- customer's special design-requirement fulfilled: 4 + 4 compartment tool, left and right article in one mould



PROJECT COMPULE

- remarkable cycle reduction through specially made cooling within the sliders
- dismantling of the components on our customer's production machine possible
- customers special design-requirement fulfilled: 4 + 4 compartment tool, left and right article in one mould



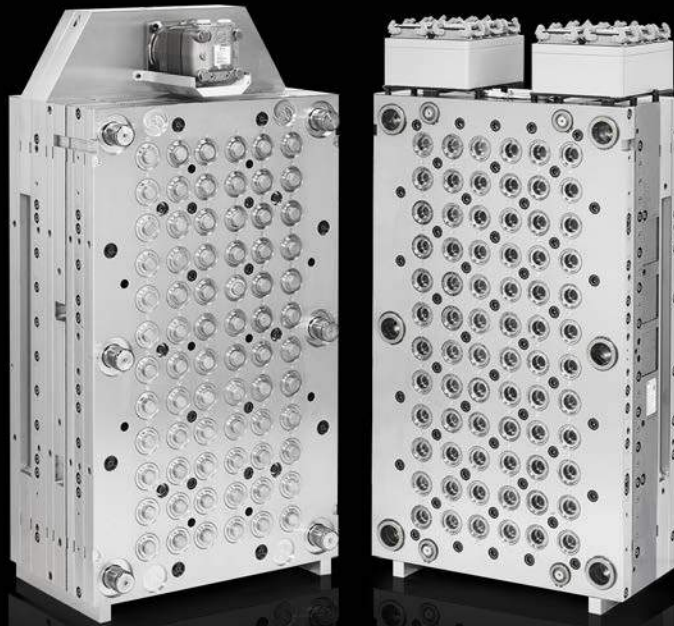
PROJECT TWO PORT CAP

- ventilation support for each nest adjustable
- allows perfect demoulding
- article injection with two nozzles each on the article ensures perfect filling behavior on the article
- material pairings and coatings specially selected for medical technology

PROJECT TWO PORT CAP



- ventilation support for each nest adjustable
- allows perfect demoulding
- article injection with two nozzles each on the article ensures perfect filling behavior on the article
- material pairings and coatings specially selected for medical technology



PROJECT SCREW CAP

- part of the "ER medicine lock" assembly
- requested number of cavities on the customers machine exceeded and implemented
- result: cycle two seconds faster than specified and 10 % cost savings
- saved production-costs and -time through easy dismantling and assembly of individual parts

PROJECT SCREW CAP



- part of the "ER medicine lock" assembly
- requested number of cavities on the customers machine exceeded and implemented
- result: cycle two seconds faster than specified and 10 % cost savings
- saved production-costs and -time through easy dismantling and assembly of individual parts

O2 SERVICES

Project Management
Engineering and Development
Tool Design
Mould Manufacturing
Maintenance





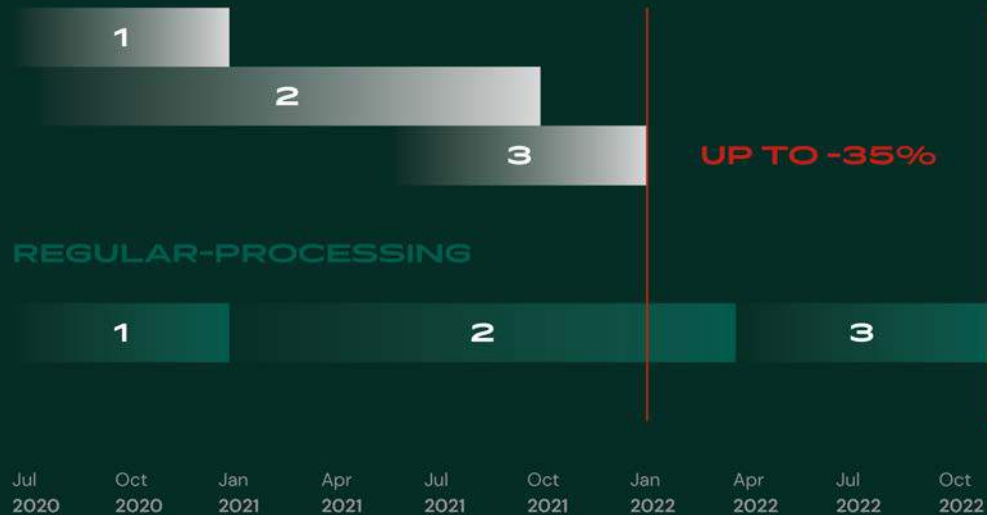
PROJECT MANAGEMENT

- worldwide support by our engineers and toolmakers
- best solutions and tested quality guaranteed
- support throughout all project stages to ensure your success
- all-in service (e. g. product counselling/ development, user training, commissioning)

ER Base Moulds
For fast market entry

- 1 Research & Study Step (Support & Transition of Data (CAD))
- 2 Pilot Step (Use of ER-Hybrid-Pilot Tools)
- 3 Industrial Step

ER FAST MARKET ENTRY PROCESS



FAST MARKET ENTRY PROCESS (FMEP)

- improved manufacturing efficiency
- reduced production downtime

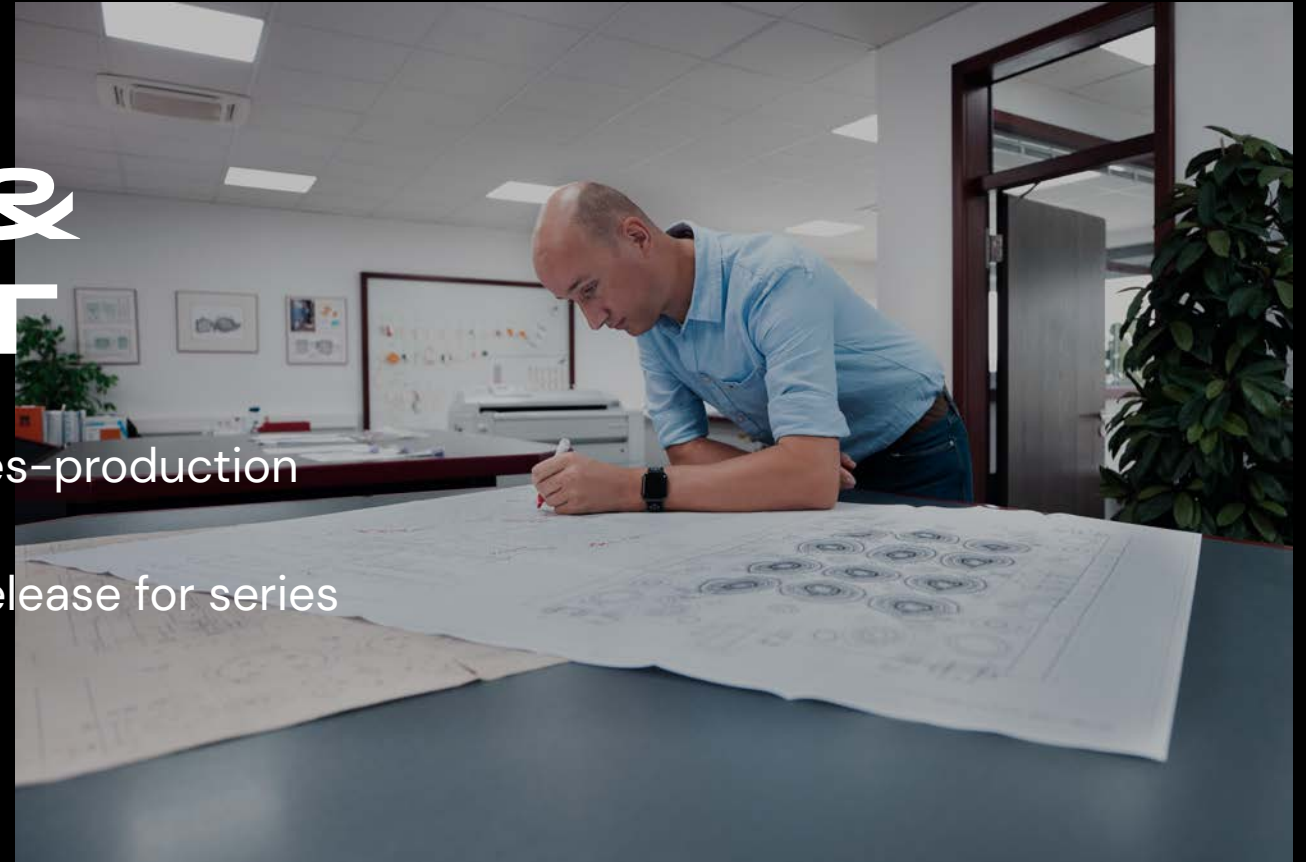
ENGINEERING & DEVELOPMENT

- development of complete assemblies
- lists of coordination measurements
- preparation of article drawings



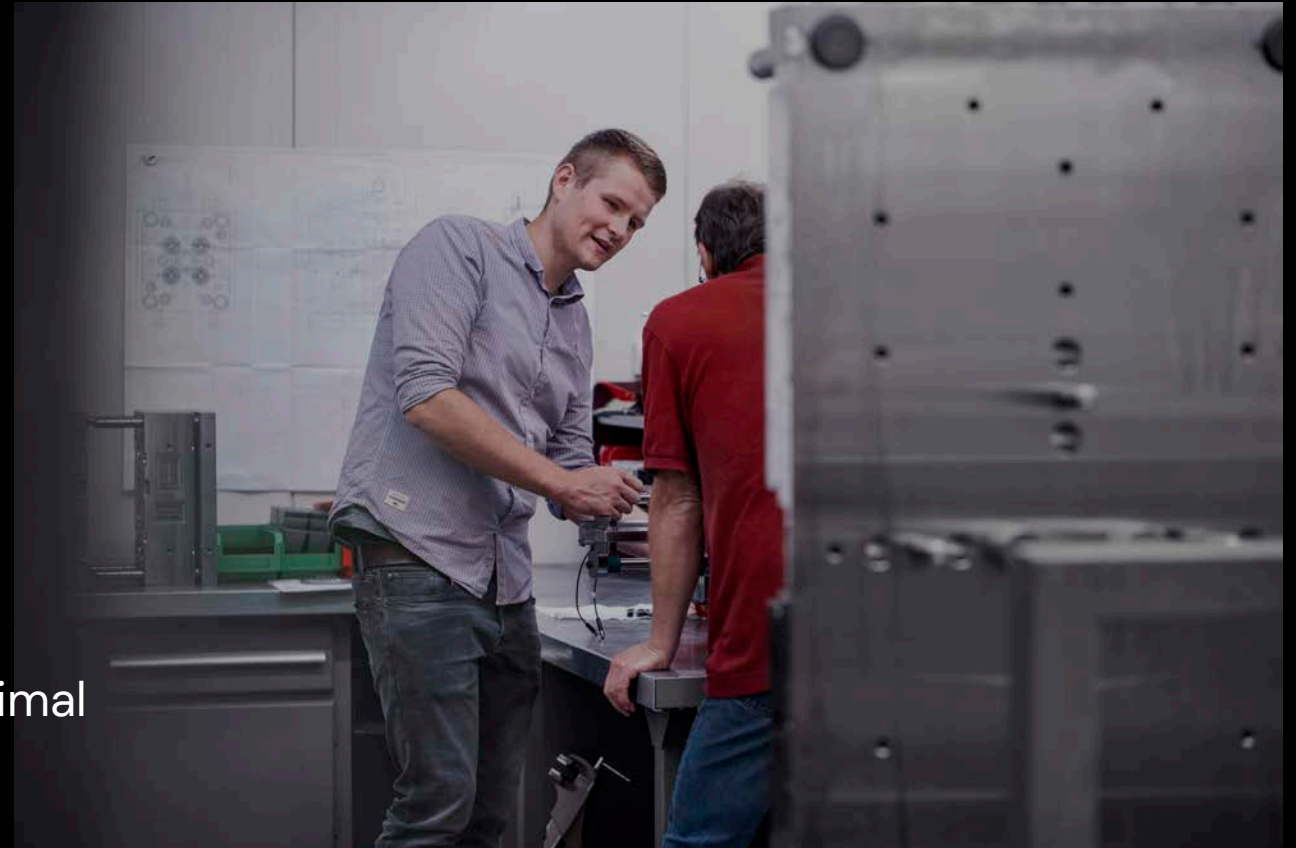
ENGINEERING & DEVELOPMENT

- testing of components before the start of series-production tools from prototype or pilot tools
- coordination of individual components up to release for series production
- implementation as series-production tool



TECHNICAL CENTRE

- technical Centre with 6 machines
- clamping forces from 20 to. to 420 to.
- tests from the first sample to series production
- production of pilot lots
- determination and precise recording of the optimal process parameters





TOOL DESIGN

- 3D, CAD & CAM-Technology
- CAD System: Creo 2.0 (Pro E)
- advanced training to ensure the optimization of new products and engineering services
- all Products are evolved as 3D models

MOULD MANUFACTURING

- manufacturing of prototypes, small-run, pilot and series-production tools
- sizes of up to about 1500 mm plate length and approx. 5 to. weight



MOULD MANUFACTURING

- very high in-house component manufacturing
- highly automated engineering technology
- 100% reproducibility of the manufactured components





MAINTANCE

- carry out on the spot repairs at short notice
- documentation of all repairs to develop concepts for preventive maintenance
- spare part warehouse
- worldwide spare part service
- standalone Revision department

03 BENEFITS

Innovation
Expectation
Quality
Know How



KNOW HOW OPTIMIZATION

- technical competence as a key success factor for our innovations and performance
- short design and delivery times by feasibility studies
- integration of the latest, state-of-the-art technologies

INNOVATION INDIVIDUALITY

- considering many factors, such as customer-specific data and practical knowledge, to provide well performing tools
- providing high throughput rates, short set-up times, profitable batch sizes
- tailor-made products, based on our customers needs

EXPECT WHAT YOU GET

- short distance „straightforward“ communication with 24h support
- toolmaker honor within family business
- highest manufacturing & service standards worldwide
- first-rate facilities: from the development of complete assemblies to the production stage

QUALITY RELIABILITY

- preparation of measurement and test reports for the plastic parts manufactured
- ongoing verification of dimensional accuracy during production
- certified according to ISO 9001:2015
- if needed, 100% measurement of all steel parts with documentation

04 CUSTOMERS

- export in over 90 countries
- export component of 50 %
- mission: deliver first-rate results
- long-term success due to the determination of being better than the rest





THOMAS LÜBBERING

Managing Director at FM Plast

FM has been working in partnership with Erwes Reifenberg for more than 40 years now. I am always amazed at how well Erwes Reifenberg understands their customers' needs and how our wishes are promptly implemented in high-quality tool technology. The support in the development of new products is also great. As a supplier of articles in the packaging sector, we can only be successful for a long time with high-quality tool technology – this is possible with Erwes Reifenberg as a partner.





how well Erwes Reifenberg understands their customers' needs and how our wishes are promptly implemented in high-quality tool technology. The support in the development of new products is also great. As a supplier of articles in the packaging sector, we can only say that it is possible with Erwes Reifenberg as a partner.

Products

Services

Benefits

Customers

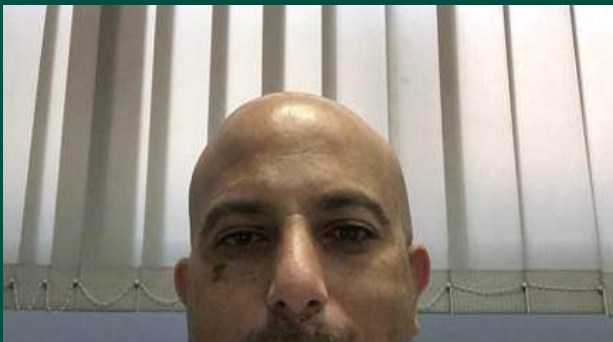
Company



MR. LIWEA EDDINE LABIDI

Regional Purchasing at Henkel

As a large scale enterprise it's important to have reliable partners globally. That's because our major function is to coordinate our internal demand in different countries from one location. Therefore it's absolutely necessary to invest in high tech injection moulds. We have to make sure, that we have downtimes which are low as possible, because we need to plan and calculate with the maximum possible output of our injection moulds. Out of this reason we work with our reliable injection mould supplier Erwes Reifenberg.





As a large scale enterprise it's important to have reliable partners globally. That's because our major function is to coordinate our internal demand in different countries from one location. Therefore it's absolutely necessary to invest in high tech injection moulds. We have to make sure, that we have downtimes which are low as possible, because we need to plan and calculate with the maximum possible output of our injection moulds. Out of this reason we work with our reliable injection mould supplier Erwes Reifenberg.

Products

Services

Benefits

Customers

Company



MR. KHALED DAJANI

Plant Manager at Arab Medical

We are working with Erwes Reifenberg for 23 years now, and we have implemented more than 30 projects during this period. From the professional article development, including corresponding functional analyses, to the project processing that runs absolutely professional and without any deviations in any case. All projects have been implemented successfully and we have trust in the quality and the long lifetime of the Erwes Reifenberg injection moulds. Also the spare part management and the fast reaction time of the after sale service is commendable. In any case, Erwes Reifenberg is a trustful and reliable partner for our success.



JOHANNES HILDE

Plant Manager at Arab Medical



this period. From the professional article development, including corresponding functional analyses, to the project processing that runs absolutely professional and without any deviations in any case. All projects have been implemented successfully and we have trust in the products, services, benefits, reliability, and timeliness of the company. Also the spare part management and the fast reaction time of the after sale service is commendable. In any case, Erwes Reifenberg is a trustful and reliable partner for our success.

JOHANNES HILLE

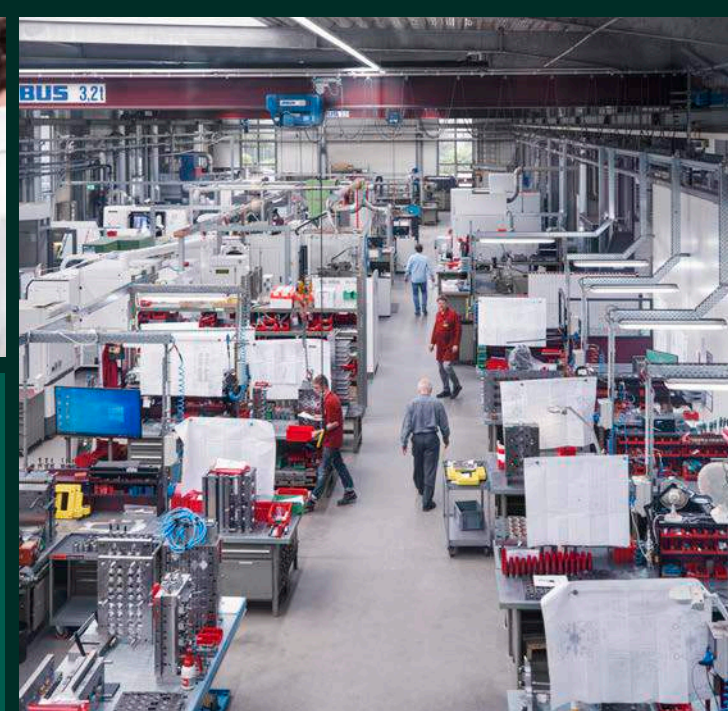
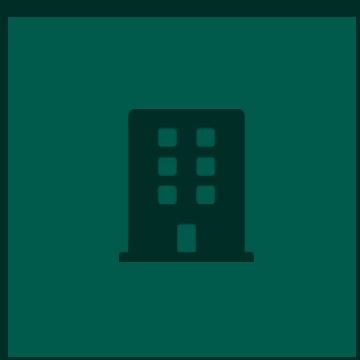
Managing Director at AFK Kunststoffverarbeitung

We have been working for the pharmaceutical industry for many years. Despite the known high requirements and the tight deadlines, we manage to satisfy customers to the fullest. Mutual competence, at Erwes Reifenberg and AFK, in mould making and injection molding, as well as the trust between us form the foundation for the sustainable success of everyone involved!

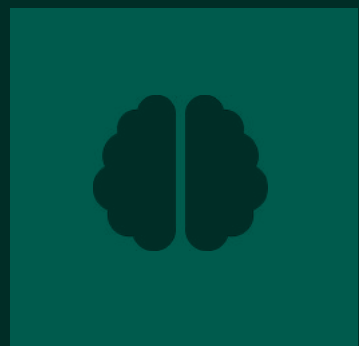


05 COMPANY



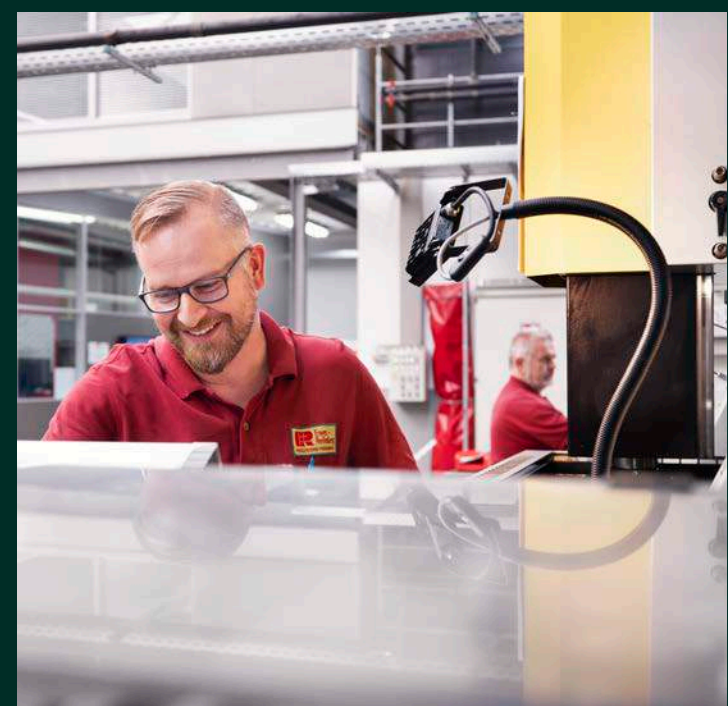


1976
founded

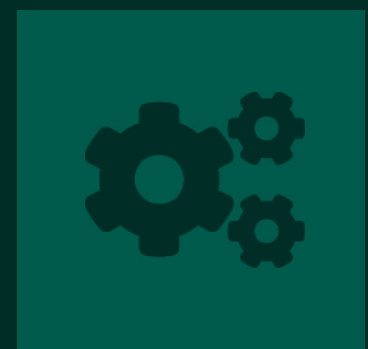


45
years of experience

100
Tools per year



export to over
90
countries



52
employees



OUR VALUES

Products

Services

Benefits

Customers

Company

Fairness

Transparency in processes

Innovative

pushing our boundaries

Honesty

our quality isn't a promise

Security

standardized quality
management

Respect

For everyone, no matter the
age, gender or experience

Team spirit

Valuing everyones know-
how and opinion

Reliability

Meeting deadlines and
guaranteeing high quality

Competitive Spirit

being better than
yesterday

Enthusiasm

creating enthusiasm for
innovation

OUR HISTORY

Products

Services

Benefits

Customers

Company



Production

1976



Founding of the Errei Company in Dünschede

1979

OUR HISTORY

Products

Services

Benefits

Customers

Company

1980



Move to Weringhausen and renaming as „Erwes Reifenberg“

1986



Expansion of production area

OUR HISTORY

Products

Services

Benefits

Customers

Company

1990



Expansion of production area

1996



Expansion of production area

OUR HISTORY

Products

Services

Benefits

Customers

Company

2001



Expansion of production area, new building

2007



Expansion of the customer base in over 90 countries

OUR HISTORY

Products

Services

Benefits

Customers

Company

2012



Constant further development of internal processes

2018



Admission of John Erwes to the management



RESOURCES

- certificated sustainability management, focused on energy supplies
- using ecofriendly technologies during production
- strictly observing conformity declarations between suppliers and our company
- preparing our junior staff by offering additional high-quality training

GET IN TOUCH NOW.

Adress

Erwes Reifenberg

Präzisions-Formenbau

An der Eichert 2

57413 Finnentrop, Germany

E-Mail

info@erwes-reifenberg.de

Website

www.erwes-reifenberg.de

Phone

+49 2721 976410

Whatsapp

+49 160 93831312